

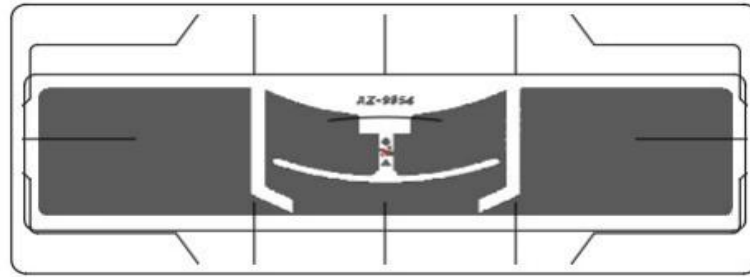
Specification

1. Physical Characteristics	Description
Antenna Dimension	19mm x 93mm
Inlay / Tag Dimension	40mm x 100mm
Antenna Pitch	45.0 ±0.50
2. Electronic Characteristics	Description
Protocol	EPC Class 1 Gen 2/ISO 18000-6C
Manufacture / IC	Alien Higgs9
EPC / TID / USER Memory	496bits/48bits/688bits
Base Material	PET + Aluminum + Micro-Chip
Face Stock	Coated paper, PP, PET
Antenna	Etched Aluminum (10µm) + PET (50µm)
Operating Frequency	860-960MHz
Read Ranging	5M – 7M on Windshield
3. Environmente & Package	Description
Operating Temperature/ Humidity	-40°C to +70°C, 20% to 90% RH Non-condensing
Storage	-25°C to +50°C, ,20% to 90% RH Non-condensing
Bending diameter	>50 mm
Static pressure	<10 MPa
Package	2000 pcs/ roll, 4rolls/Carton
4. Delivery Formats	Description
Available formats	Paper tag, PET Tag
Quality	100% tested with out-of-tolerance inlay marked
Inner core diameter	76 mm/3 inch

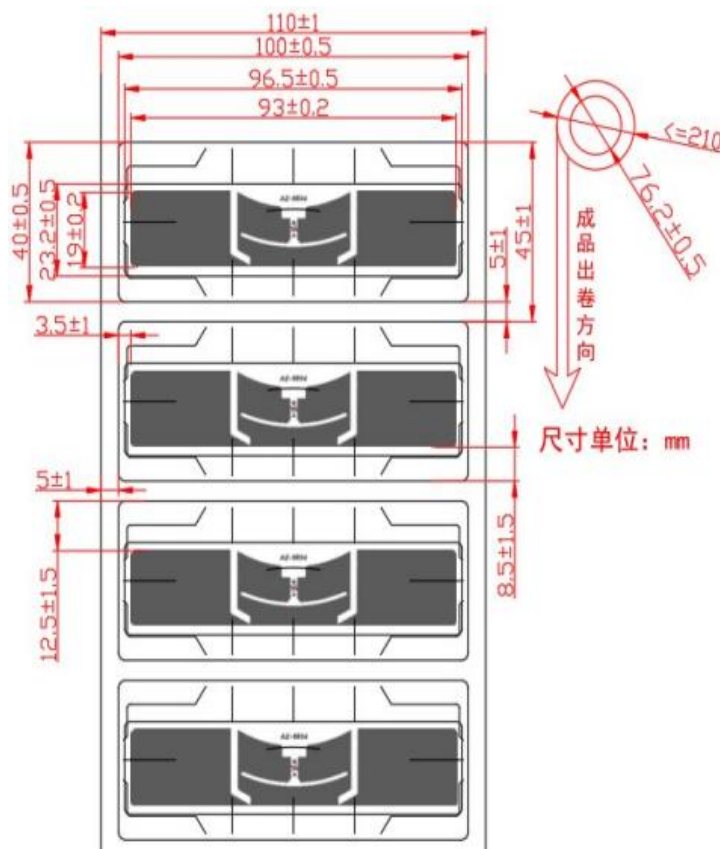
The information contained on this Document is considered to be confidential material proprietary to JYL-Tech, and this information shall not be disclosed, duplicated or copied for any purpose, Nor made available for any third party without the prior consent to JYL-Tech.



RFID Layer Out



Dimension



Package Info.

ESD Package Box, 2,000Pcs/Roll, 4/8 rolls/Ctns. Packing in roll for printing and cutting at customer



The information contained on this Document is considered to be confidential material proprietary to JYL-Tech, and this information shall not be disclosed, duplicated or copied for any purpose, Nor made available for any third party without the prior consent to JYL-Tech.

